

Getting Started with DeVry University's Academic Intranet

What is the Academic Intranet?

This document is a guide to using the Academic Intranet. The Academic Intranet is a web-based interface that allows deans, faculty, curriculum managers, and academic staff to communicate with one another and exchange ideas.

Accessing the Academic Intranet

1. To access the Student Portal, you must first log into web-based interface by entering <http://academics.devry.edu> into the *address bar* of your web browser.

A “Welcome Faculty & Staff” and Login Screen appears as shown below.

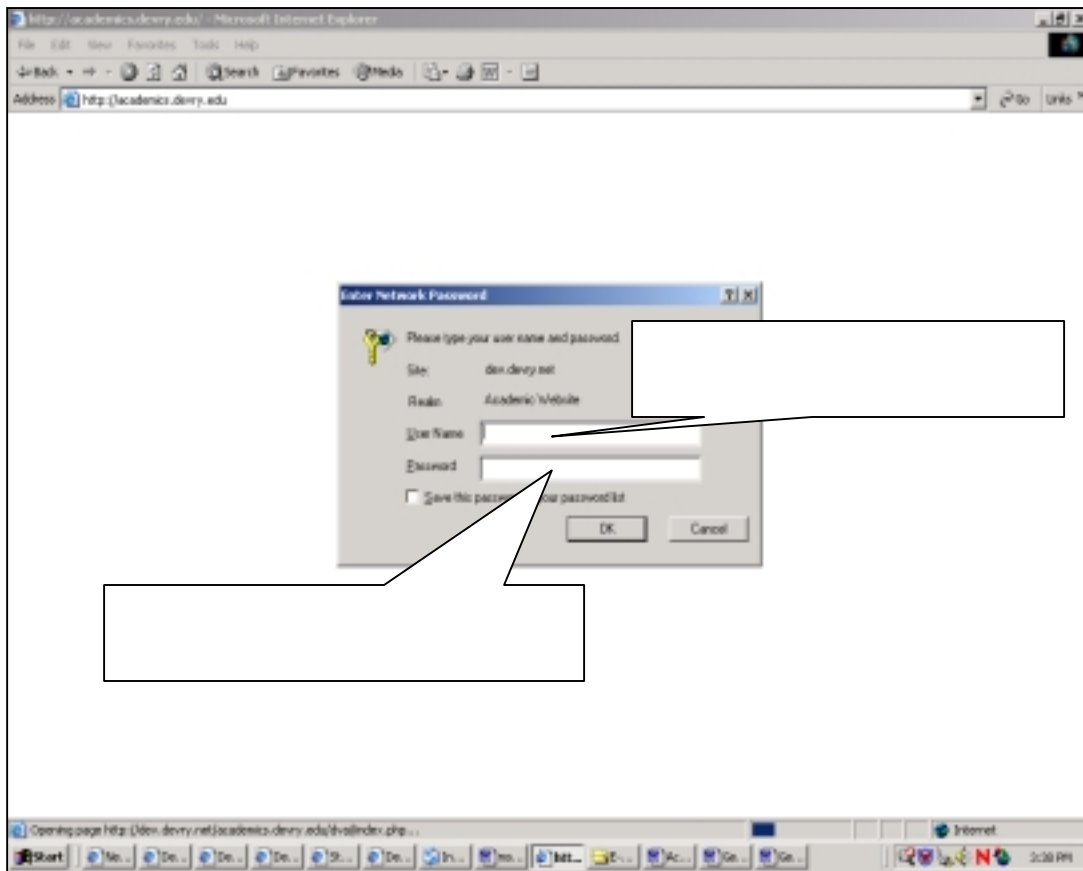


Figure 1

Faculty & Staff Login Screen

2. Enter your 9-digit **DSI** (uppercase D) number in the **username** field. (E.g. D99553490).
3. Enter your **password**: MMY or MYY (Date of Hire) in the **password** field.

An “Academic Intranet” Screen appears as shown below.

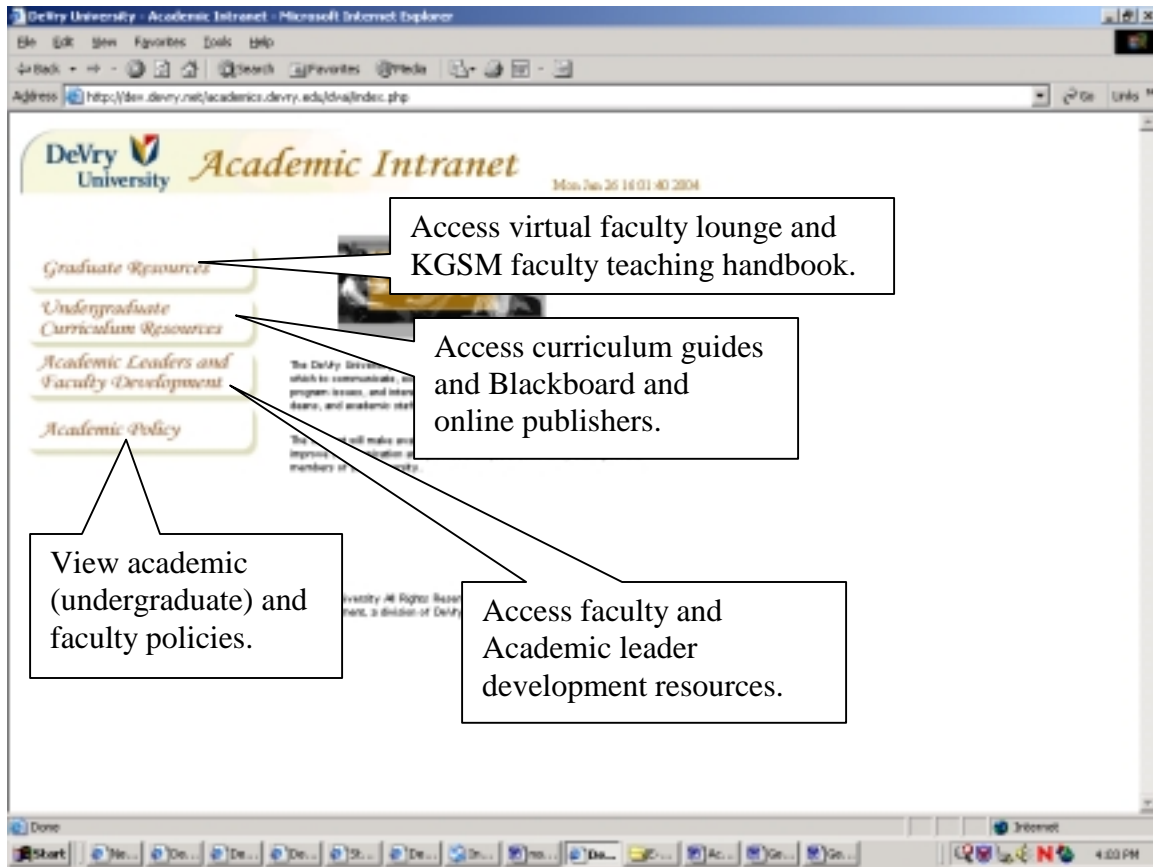


Figure 2

Academic Intranet Screen

4. You have now logged into the Academic Intranet Home Page. From this page you can access a variety of tools to help you be more informed improve communication, and provide a unique e-Community setting for the members of the University.